



## Demographic and Academic Characteristics of Online-Only Students at KCC

### Part 1. Executive Summary

The population of online-only students is relatively stable from both a demographic and academic standpoint. Online-only students have consistently represented about 8% of the KCC student body since 2011, with slight upticks during the spring semester. Compared to their traditional peers, online-only students are consistently older, more female, with a greater proportion of students self-identifying as Native Hawaiian or Caucasian. It is particularly striking that online-only students at KCC are almost overwhelmingly female, even at a campus in which females have greatly outnumbered males for at least the last five years. Similarly, online-only students are less international and more likely to have US origins<sup>1</sup>. The overwhelming majority of KCC students from either group are from the state of Hawai'i – and from O'ahu – but online-only students show more geographical diversity within O'ahu, with fewer coming from Honolulu and more from other parts of the island. Academically, online-only students are more likely to be classified as incoming transfer students, less likely to be first time freshman, and they take fewer credits per semester as well.

This report is timely because Outcome 2b in the 2015-2021 KCC Strategic Plan has set goals for course success rates in distance education courses at 75%. However, the data presented below show that online-only students have worse course outcomes than traditional students overall; their course success rates have remained stable at about 60% for the past five years, compared to the current KCC Institutional Effectiveness Measure (IEM) of about 72% for Fall 2015. They also pass their courses at lower rates than traditional students and both fail and withdraw at higher rates. Their average semester-long GPA is lower than that for traditional students, and reenrollment for online-only students is about 20-30% lower than for traditional students. These data do come with some caveats (for example, overall distance education course success rates are slightly higher across the entire campus – 64% for Fall 2015 – because not every student enrolled in an online course is only enrolled online), but, generally speaking, this report indicates that the strategic plan outcome may need to be recalibrated for this particular student population.

The academic picture for online-only students is not entirely bleak, however. There is some indication that these students are defined by extremes as a group. More have very low GPAs, but the middle ground is more compact compared to their traditional peers, and about the same proportion have very high GPAs as their peers. This could be partly behind the evident pattern that while online-only students are about 8% of the population, they make up a slightly higher proportion (in the 10-14% range) of transfers to UH and KCC graduations.

---

<sup>1</sup> F1 visa restrictions prohibit international students from enrolling online-only as defined in this report. Correspondingly, relatively fewer students will belong to ethnic groups that are well represented by KCC international students and relatively more will belong to ethnic groups that are well represented by KCC domestic students.

## Part 2. Data

### 2.1 Demographics

**Table 1: Proportion of Students Enrolling Only Online**

	Traditional		Only Online	
	N	%	N	%
Fall 2011	6556	<b>92.3</b>	544	<b>7.7</b>
Spring 2012	5838	<b>91.9</b>	518	<b>8.1</b>
Fall 2012	6509	<b>92.3</b>	546	<b>7.7</b>
Spring 2013	5753	<b>91.5</b>	535	<b>8.5</b>
Fall 2013	6230	<b>92.1</b>	536	<b>7.9</b>
Spring 2014	5655	<b>91.7</b>	514	<b>8.3</b>
Fall 2014	6026	<b>92.5</b>	486	<b>7.5</b>
Spring 2015	5593	<b>91.4</b>	524	<b>8.6</b>
Fall 2015	5943	<b>91.9</b>	527	<b>8.1</b>
Spring 2016	5378	<b>91.6</b>	490	<b>8.4</b>
All Terms	59481	<b>91.9</b>	5220	<b>8.1</b>

**Table 2: Age Ranges of Online-Only Students By Semester**

	Fall 2011				Spring 2012				Fall 2012				Spring 2013			
	Traditional		Only Online		Traditional		Only Online		Traditional		Only Online		Traditional		Only Online	
	N	%	N	%	N	%	N	%	N	%	N	%	N	%	N	%
<b>16 &amp; under</b>	24	<b>0.4</b>	1	<b>0.2</b>	19	<b>0.3</b>	1	<b>0.2</b>	31	<b>0.5</b>	1	<b>0.2</b>	22	<b>0.4</b>	2	<b>0.4</b>
<b>17-19</b>	1869	<b>28.5</b>	37	<b>6.8</b>	1478	<b>25.3</b>	30	<b>5.8</b>	2000	<b>30.7</b>	23	<b>4.2</b>	1576	<b>27.4</b>	29	<b>5.4</b>
<b>20-22</b>	1775	<b>27.1</b>	112	<b>20.6</b>	1654	<b>28.3</b>	112	<b>21.6</b>	1780	<b>27.3</b>	124	<b>22.7</b>	1644	<b>28.6</b>	112	<b>20.9</b>
<b>23-25</b>	906	<b>13.8</b>	92	<b>16.9</b>	870	<b>14.9</b>	96	<b>18.5</b>	918	<b>14.1</b>	102	<b>18.7</b>	839	<b>14.6</b>	104	<b>19.4</b>
<b>26-28</b>	606	<b>9.2</b>	74	<b>13.6</b>	532	<b>9.1</b>	78	<b>15.1</b>	530	<b>8.1</b>	76	<b>13.9</b>	508	<b>8.8</b>	71	<b>13.3</b>
<b>29 &amp; over</b>	1375	<b>21.0</b>	228	<b>41.9</b>	1285	<b>22.0</b>	201	<b>38.8</b>	1250	<b>19.2</b>	220	<b>40.3</b>	1164	<b>20.2</b>	217	<b>40.6</b>
<b>All Students</b>	6555	<b>100</b>	544	<b>100</b>	5838	<b>100</b>	518	<b>100</b>	6509	<b>100</b>	546	<b>100</b>	5753	<b>100</b>	535	<b>100</b>

	Fall 2013				Spring 2014				Fall 2014				Spring 2015			
	Traditional		Only Online		Traditional		Only Online		Traditional		Only Online		Traditional		Only Online	
	N	%	N	%	N	%	N	%	N	%	N	%	N	%	N	%
<b>16 &amp; under</b>	36	<b>0.6</b>	1	<b>0.2</b>	27	<b>0.5</b>	1	<b>0.2</b>	48	<b>0.8</b>	1	<b>0.2</b>	54	<b>1.0</b>	3	<b>0.6</b>
<b>17-19</b>	1965	<b>31.5</b>	32	<b>6.0</b>	1514	<b>26.8</b>	31	<b>6.0</b>	1830	<b>30.4</b>	43	<b>8.8</b>	1493	<b>26.7</b>	42	<b>8.0</b>
<b>20-22</b>	1715	<b>27.5</b>	121	<b>22.6</b>	1712	<b>30.3</b>	96	<b>18.7</b>	1740	<b>28.9</b>	85	<b>17.5</b>	1675	<b>29.9</b>	99	<b>18.9</b>
<b>23-25</b>	821	<b>13.2</b>	91	<b>17.0</b>	809	<b>14.3</b>	112	<b>21.8</b>	814	<b>13.5</b>	123	<b>25.3</b>	815	<b>14.6</b>	130	<b>24.8</b>
<b>26-28</b>	541	<b>8.7</b>	75	<b>14.0</b>	496	<b>8.8</b>	78	<b>15.2</b>	504	<b>8.4</b>	66	<b>13.6</b>	483	<b>8.6</b>	62	<b>11.8</b>
<b>29 &amp; over</b>	1152	<b>18.5</b>	216	<b>40.3</b>	1097	<b>19.4</b>	196	<b>38.1</b>	1090	<b>18.1</b>	168	<b>34.6</b>	1073	<b>19.2</b>	188	<b>35.9</b>
<b>All Students</b>	6230	<b>100</b>	536	<b>100</b>	5655	<b>100</b>	514	<b>100</b>	6026	<b>100</b>	486	<b>100</b>	5593	<b>100</b>	524	<b>100</b>

	Fall 2015				Spring 2016				Total	
	Traditional		Only Online		Traditional		Only Online			
	N	%	N	%	N	%	N	%	N	%
<b>16 &amp; under</b>	81	<b>1.4</b>	2	<b>0.4</b>	53	<b>1.0</b>	1	<b>0.2</b>	409	<b>0.6</b>
<b>17-19</b>	1848	<b>31.1</b>	42	<b>8.0</b>	1451	<b>27.0</b>	46	<b>9.4</b>	17379	<b>26.9</b>
<b>20-22</b>	1678	<b>28.2</b>	117	<b>22.2</b>	1599	<b>29.7</b>	111	<b>22.7</b>	18061	<b>27.9</b>
<b>23-25</b>	826	<b>13.9</b>	98	<b>18.6</b>	802	<b>14.9</b>	100	<b>20.4</b>	9468	<b>14.6</b>
<b>26-28</b>	467	<b>7.9</b>	86	<b>16.3</b>	424	<b>7.9</b>	67	<b>13.7</b>	5824	<b>9.0</b>
<b>29 &amp; over</b>	1043	<b>17.6</b>	182	<b>34.5</b>	1049	<b>19.5</b>	165	<b>33.7</b>	13559	<b>21.0</b>
<b>All Students</b>	5943	<b>100</b>	527	<b>100</b>	5378	<b>100</b>	490	<b>100</b>	64700	<b>100</b>

### Historical Distribution of Age Groups By Population



Figure 1

**Table 3: Gender of Online Only Students By Semester**

	Fall 2011				Spring 2012				Fall 2012				Spring 2013			
	Traditional		Only Online		Traditional		Only Online		Traditional		Only Online		Traditional		Only Online	
	N	%	N	%	N	%	N	%	N	%	N	%	N	%	N	%
<b>Female</b>	3509	<b>53.5</b>	377	<b>69.3</b>	3151	<b>54.0</b>	350	<b>67.6</b>	3539	<b>54.4</b>	371	<b>67.9</b>	3165	<b>55.0</b>	337	<b>63.0</b>
<b>Male</b>	3001	<b>45.8</b>	164	<b>30.1</b>	2651	<b>45.4</b>	167	<b>32.2</b>	2921	<b>44.9</b>	174	<b>31.9</b>	2554	<b>44.4</b>	198	<b>37.0</b>
<b>No Data</b>	46	<b>0.7</b>	3	<b>0.6</b>	36	<b>0.6</b>	1	<b>0.2</b>	49	<b>0.8</b>	1	<b>0.2</b>	34	<b>0.6</b>	.	.
<b>All Students</b>	6556	<b>100</b>	544	<b>100</b>	5838	<b>100</b>	518	<b>100</b>	6509	<b>100</b>	546	<b>100</b>	5753	<b>100</b>	535	<b>100</b>

	Fall 2013				Spring 2014				Fall 2014				Spring 2015			
	Traditional		Only Online		Traditional		Only Online		Traditional		Only Online		Traditional		Only Online	
	N	%	N	%	N	%	N	%	N	%	N	%	N	%	N	%
<b>Female</b>	3424	<b>55.0</b>	353	<b>65.9</b>	3090	<b>54.6</b>	341	<b>66.3</b>	3338	<b>55.4</b>	332	<b>68.3</b>	3125	<b>55.9</b>	351	<b>67.0</b>
<b>Male</b>	2768	<b>44.4</b>	179	<b>33.4</b>	2537	<b>44.9</b>	173	<b>33.7</b>	2661	<b>44.2</b>	152	<b>31.3</b>	2447	<b>43.8</b>	171	<b>32.6</b>
<b>No Data</b>	38	<b>0.6</b>	4	<b>0.7</b>	28	<b>0.5</b>	.	.	27	<b>0.4</b>	2	<b>0.4</b>	21	<b>0.4</b>	2	<b>0.4</b>
<b>All Students</b>	6230	<b>100</b>	536	<b>100</b>	5655	<b>100</b>	514	<b>100</b>	6026	<b>100</b>	486	<b>100</b>	5593	<b>100</b>	524	<b>100</b>

	Fall 2015				Spring 2016				Total	
	Traditional		Only Online		Traditional		Only Online		N	%
	N	%	N	%	N	%	N	%		
<b>Female</b>	3341	<b>56.2</b>	381	<b>72.3</b>	3044	<b>56.6</b>	335	<b>68.4</b>	36254	<b>56.0</b>
<b>Male</b>	2584	<b>43.5</b>	146	<b>27.7</b>	2319	<b>43.1</b>	155	<b>31.6</b>	28122	<b>43.5</b>
<b>No Data</b>	18	<b>0.3</b>	.	.	15	<b>0.3</b>	.	.	325	<b>0.5</b>
<b>All Students</b>	5943	<b>100</b>	527	<b>100</b>	5378	<b>100</b>	490	<b>100</b>	64701	<b>100</b>

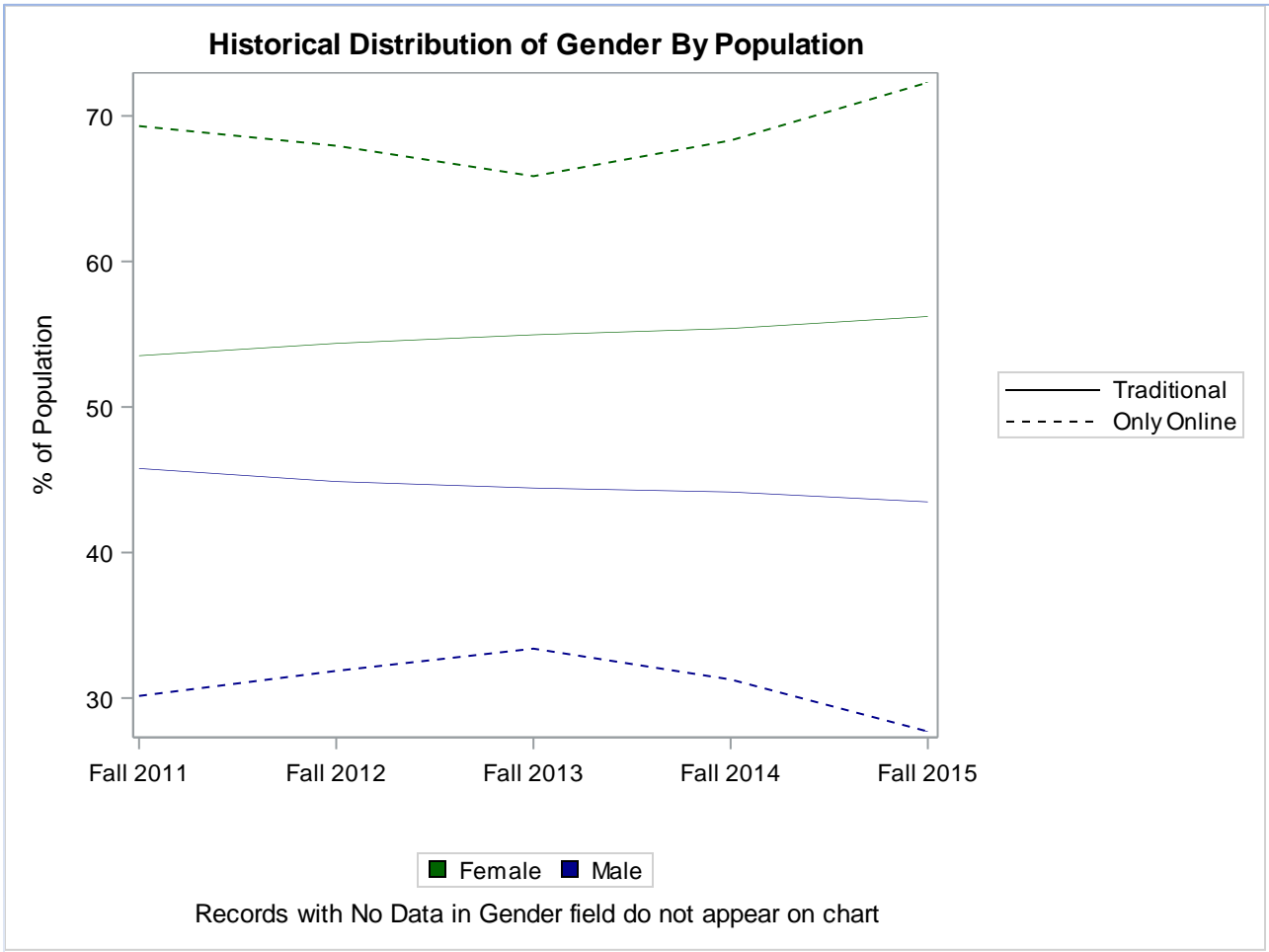


Figure 2

**Table 4: Ethnicity of Online-Only Students By Semester**

	Fall 2011				Spring 2012				Fall 2012				Spring 2013			
	Traditional		Only Online		Traditional		Only Online		Traditional		Only Online		Traditional		Only Online	
	N	%	N	%	N	%	N	%	N	%	N	%	N	%	N	%
<b>African American or Black</b>	77	<b>1.2</b>	2	<b>0.4</b>	68	<b>1.2</b>	4	<b>0.8</b>	71	<b>1.1</b>	9	<b>1.6</b>	68	<b>1.2</b>	9	<b>1.7</b>
<b>Amer Indian or Alaskan Native</b>	15	<b>0.2</b>	2	<b>0.4</b>	19	<b>0.3</b>	.	.	15	<b>0.2</b>	3	<b>0.5</b>	19	<b>0.3</b>	1	<b>0.2</b>
<b>Asian Indian</b>	32	<b>0.5</b>	2	<b>0.4</b>	35	<b>0.6</b>	4	<b>0.8</b>	29	<b>0.4</b>	1	<b>0.2</b>	29	<b>0.5</b>	.	.
<b>Caucasian or White</b>	804	<b>12.3</b>	86	<b>15.8</b>	735	<b>12.6</b>	90	<b>17.4</b>	770	<b>11.8</b>	88	<b>16.1</b>	706	<b>12.3</b>	94	<b>17.6</b>
<b>Chinese</b>	583	<b>8.9</b>	27	<b>5.0</b>	523	<b>9.0</b>	26	<b>5.0</b>	569	<b>8.7</b>	36	<b>6.6</b>	484	<b>8.4</b>	30	<b>5.6</b>
<b>Filipino</b>	844	<b>12.9</b>	70	<b>12.9</b>	782	<b>13.4</b>	62	<b>12.0</b>	817	<b>12.6</b>	62	<b>11.4</b>	717	<b>12.5</b>	65	<b>12.1</b>
<b>Guamanian or Chamorro</b>	22	<b>0.3</b>	2	<b>0.4</b>	23	<b>0.4</b>	.	.	24	<b>0.4</b>	1	<b>0.2</b>	22	<b>0.4</b>	.	.
<b>Hispanic</b>	124	<b>1.9</b>	13	<b>2.4</b>	102	<b>1.7</b>	6	<b>1.2</b>	112	<b>1.7</b>	6	<b>1.1</b>	83	<b>1.4</b>	7	<b>1.3</b>
<b>Japanese</b>	921	<b>14.0</b>	73	<b>13.4</b>	793	<b>13.6</b>	72	<b>13.9</b>	832	<b>12.8</b>	76	<b>13.9</b>	757	<b>13.2</b>	66	<b>12.3</b>
<b>Korean</b>	341	<b>5.2</b>	12	<b>2.2</b>	331	<b>5.7</b>	17	<b>3.3</b>	388	<b>6.0</b>	11	<b>2.0</b>	351	<b>6.1</b>	12	<b>2.2</b>
<b>Laotian</b>	11	<b>0.2</b>	1	<b>0.2</b>	6	<b>0.1</b>	.	.	13	<b>0.2</b>	1	<b>0.2</b>	10	<b>0.2</b>	.	.
<b>Micronesian (not GC)</b>	37	<b>0.6</b>	1	<b>0.2</b>	28	<b>0.5</b>	2	<b>0.4</b>	32	<b>0.5</b>	3	<b>0.5</b>	26	<b>0.5</b>	2	<b>0.4</b>
<b>Mixed Asian</b>	433	<b>6.6</b>	39	<b>7.2</b>	393	<b>6.7</b>	38	<b>7.3</b>	467	<b>7.2</b>	34	<b>6.2</b>	433	<b>7.5</b>	38	<b>7.1</b>
<b>Mixed Pacific Islander</b>	6	<b>0.1</b>	.	.	7	<b>0.1</b>	.	.	6	<b>0.1</b>	.	.	4	<b>0.1</b>	.	.
<b>Mixed Race (2 or more)</b>	773	<b>11.8</b>	71	<b>13.1</b>	682	<b>11.7</b>	66	<b>12.7</b>	809	<b>12.4</b>	74	<b>13.6</b>	718	<b>12.5</b>	84	<b>15.7</b>
<b>Native Hawaiian or Part-Hawn</b>	1217	<b>18.6</b>	125	<b>23.0</b>	1009	<b>17.3</b>	115	<b>22.2</b>	1164	<b>17.9</b>	126	<b>23.1</b>	991	<b>17.2</b>	117	<b>21.9</b>
<b>No Data</b>	74	<b>1.1</b>	1	<b>0.2</b>	90	<b>1.5</b>	2	<b>0.4</b>	145	<b>2.2</b>	1	<b>0.2</b>	93	<b>1.6</b>	.	.
<b>Other Asian</b>	49	<b>0.7</b>	4	<b>0.7</b>	49	<b>0.8</b>	2	<b>0.4</b>	46	<b>0.7</b>	2	<b>0.4</b>	38	<b>0.7</b>	4	<b>0.7</b>
<b>Other Pacific Islander</b>	22	<b>0.3</b>	2	<b>0.4</b>	22	<b>0.4</b>	3	<b>0.6</b>	24	<b>0.4</b>	2	<b>0.4</b>	24	<b>0.4</b>	1	<b>0.2</b>
<b>Samoaan</b>	37	<b>0.6</b>	3	<b>0.6</b>	18	<b>0.3</b>	2	<b>0.4</b>	17	<b>0.3</b>	2	<b>0.4</b>	19	<b>0.3</b>	1	<b>0.2</b>
<b>Thai</b>	11	<b>0.2</b>	1	<b>0.2</b>	13	<b>0.2</b>	.	.	11	<b>0.2</b>	1	<b>0.2</b>	17	<b>0.3</b>	.	.
<b>Tongan</b>	11	<b>0.2</b>	.	.	6	<b>0.1</b>	1	<b>0.2</b>	13	<b>0.2</b>	3	<b>0.5</b>	10	<b>0.2</b>	1	<b>0.2</b>
<b>Vietnamese</b>	112	<b>1.7</b>	7	<b>1.3</b>	104	<b>1.8</b>	6	<b>1.2</b>	135	<b>2.1</b>	4	<b>0.7</b>	134	<b>2.3</b>	3	<b>0.6</b>
<b>All Students</b>	6556	<b>100</b>	544	<b>100</b>	5838	<b>100</b>	518	<b>100</b>	6509	<b>100</b>	546	<b>100</b>	5753	<b>100</b>	535	<b>100</b>

**Table 4 (con't): Ethnicity of Online-Only Students By Semester**

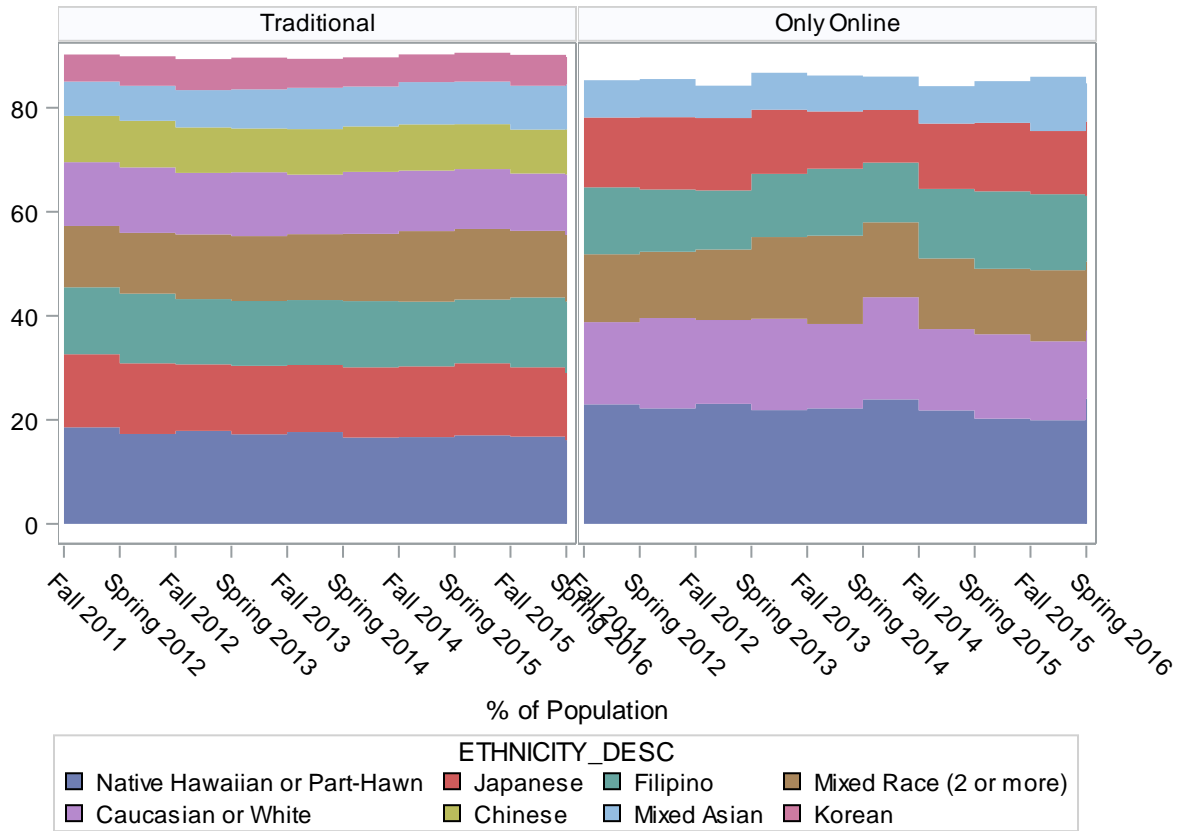
	Fall 2013				Spring 2014				Fall 2014				Spring 2015			
	Traditional		Only Online		Traditional		Only Online		Traditional		Only Online		Traditional		Only Online	
	N	%	N	%	N	%	N	%	N	%	N	%	N	%	N	%
<b>African American or Black</b>	80	<b>1.3</b>	11	<b>2.1</b>	70	<b>1.2</b>	7	<b>1.4</b>	73	<b>1.2</b>	8	<b>1.6</b>	61	<b>1.1</b>	10	<b>1.9</b>
<b>Amer Indian or Alaskan Native</b>	22	<b>0.4</b>	2	<b>0.4</b>	21	<b>0.4</b>	5	<b>1.0</b>	13	<b>0.2</b>	3	<b>0.6</b>	9	<b>0.2</b>	3	<b>0.6</b>
<b>Asian Indian</b>	27	<b>0.4</b>	.	.	27	<b>0.5</b>	1	<b>0.2</b>	24	<b>0.4</b>	5	<b>1.0</b>	30	<b>0.5</b>	3	<b>0.6</b>
<b>Caucasian or White</b>	713	<b>11.4</b>	87	<b>16.2</b>	674	<b>11.9</b>	101	<b>19.6</b>	701	<b>11.6</b>	76	<b>15.6</b>	644	<b>11.5</b>	85	<b>16.2</b>
<b>Chinese</b>	545	<b>8.7</b>	25	<b>4.7</b>	494	<b>8.7</b>	18	<b>3.5</b>	535	<b>8.9</b>	21	<b>4.3</b>	483	<b>8.6</b>	23	<b>4.4</b>
<b>Filipino</b>	778	<b>12.5</b>	69	<b>12.9</b>	720	<b>12.7</b>	59	<b>11.5</b>	749	<b>12.4</b>	65	<b>13.4</b>	685	<b>12.2</b>	78	<b>14.9</b>
<b>Guamanian or Chamorro</b>	20	<b>0.3</b>	.	.	14	<b>0.2</b>	.	.	15	<b>0.2</b>	2	<b>0.4</b>	13	<b>0.2</b>	1	<b>0.2</b>
<b>Hispanic</b>	95	<b>1.5</b>	8	<b>1.5</b>	89	<b>1.6</b>	13	<b>2.5</b>	95	<b>1.6</b>	11	<b>2.3</b>	96	<b>1.7</b>	11	<b>2.1</b>
<b>Japanese</b>	803	<b>12.9</b>	59	<b>11.0</b>	763	<b>13.5</b>	52	<b>10.1</b>	820	<b>13.6</b>	61	<b>12.6</b>	775	<b>13.9</b>	69	<b>13.2</b>
<b>Korean</b>	347	<b>5.6</b>	13	<b>2.4</b>	317	<b>5.6</b>	16	<b>3.1</b>	321	<b>5.3</b>	13	<b>2.7</b>	310	<b>5.5</b>	7	<b>1.3</b>
<b>Laotian</b>	16	<b>0.3</b>	.	.	13	<b>0.2</b>	.	.	9	<b>0.1</b>	1	<b>0.2</b>	11	<b>0.2</b>	1	<b>0.2</b>
<b>Micronesia (not GC)</b>	32	<b>0.5</b>	3	<b>0.6</b>	28	<b>0.5</b>	1	<b>0.2</b>	35	<b>0.6</b>	1	<b>0.2</b>	37	<b>0.7</b>	1	<b>0.2</b>
<b>Mixed Asian</b>	495	<b>7.9</b>	37	<b>6.9</b>	434	<b>7.7</b>	33	<b>6.4</b>	490	<b>8.1</b>	35	<b>7.2</b>	458	<b>8.2</b>	42	<b>8.0</b>
<b>Mixed Pacific Islander</b>	11	<b>0.2</b>	1	<b>0.2</b>	11	<b>0.2</b>	.	.	5	<b>0.1</b>	.	.	9	<b>0.2</b>	.	.
<b>Mixed Race (2 or more)</b>	789	<b>12.7</b>	91	<b>17.0</b>	731	<b>12.9</b>	74	<b>14.4</b>	818	<b>13.6</b>	66	<b>13.6</b>	759	<b>13.6</b>	66	<b>12.6</b>
<b>Native Hawaiian or Part-Hawn</b>	1100	<b>17.7</b>	119	<b>22.2</b>	939	<b>16.6</b>	123	<b>23.9</b>	1005	<b>16.7</b>	106	<b>21.8</b>	952	<b>17.0</b>	106	<b>20.2</b>
<b>No Data</b>	131	<b>2.1</b>	.	.	112	<b>2.0</b>	.	.	112	<b>1.9</b>	2	<b>0.4</b>	84	<b>1.5</b>	1	<b>0.2</b>
<b>Other Asian</b>	30	<b>0.5</b>	4	<b>0.7</b>	29	<b>0.5</b>	1	<b>0.2</b>	25	<b>0.4</b>	2	<b>0.4</b>	25	<b>0.4</b>	3	<b>0.6</b>
<b>Other Pacific Islander</b>	24	<b>0.4</b>	1	<b>0.2</b>	18	<b>0.3</b>	1	<b>0.2</b>	21	<b>0.3</b>	2	<b>0.4</b>	11	<b>0.2</b>	1	<b>0.2</b>
<b>Samoan</b>	25	<b>0.4</b>	2	<b>0.4</b>	22	<b>0.4</b>	2	<b>0.4</b>	15	<b>0.2</b>	2	<b>0.4</b>	14	<b>0.3</b>	3	<b>0.6</b>
<b>Thai</b>	17	<b>0.3</b>	.	.	16	<b>0.3</b>	.	.	16	<b>0.3</b>	.	.	10	<b>0.2</b>	2	<b>0.4</b>
<b>Tongan</b>	9	<b>0.1</b>	1	<b>0.2</b>	7	<b>0.1</b>	.	.	4	<b>0.1</b>	1	<b>0.2</b>	5	<b>0.1</b>	.	.
<b>Vietnamese</b>	121	<b>1.9</b>	3	<b>0.6</b>	106	<b>1.9</b>	7	<b>1.4</b>	125	<b>2.1</b>	3	<b>0.6</b>	112	<b>2.0</b>	8	<b>1.5</b>
<b>All Students</b>	6230	<b>100</b>	536	<b>100</b>	5655	<b>100</b>	514	<b>100</b>	6026	<b>100</b>	486	<b>100</b>	5593	<b>100</b>	524	<b>100</b>



**Table 4 (con't): Ethnicity of Online-Only Students By Semester**

	Fall 2015				Spring 2016				Total	
	Traditional		Only Online		Traditional		Only Online			
	N	%	N	%	N	%	N	%		
<b>African American or Black</b>	74	<b>1.2</b>	6	<b>1.1</b>	77	<b>1.4</b>	7	<b>1.4</b>	792	<b>1.2</b>
<b>Amer Indian or Alaskan Native</b>	12	<b>0.2</b>	3	<b>0.6</b>	15	<b>0.3</b>	3	<b>0.6</b>	185	<b>0.3</b>
<b>Asian Indian</b>	30	<b>0.5</b>	2	<b>0.4</b>	30	<b>0.6</b>	1	<b>0.2</b>	312	<b>0.5</b>
<b>Caucasian or White</b>	655	<b>11.0</b>	80	<b>15.2</b>	625	<b>11.6</b>	64	<b>13.1</b>	7878	<b>12.2</b>
<b>Chinese</b>	502	<b>8.4</b>	21	<b>4.0</b>	466	<b>8.7</b>	20	<b>4.1</b>	5431	<b>8.4</b>
<b>Filipino</b>	798	<b>13.4</b>	77	<b>14.6</b>	739	<b>13.7</b>	62	<b>12.7</b>	8298	<b>12.8</b>
<b>Guamanian or Chamorro</b>	10	<b>0.2</b>	1	<b>0.2</b>	9	<b>0.2</b>	.	.	179	<b>0.3</b>
<b>Hispanic</b>	99	<b>1.7</b>	18	<b>3.4</b>	88	<b>1.6</b>	12	<b>2.4</b>	1088	<b>1.7</b>
<b>Japanese</b>	792	<b>13.3</b>	64	<b>12.1</b>	694	<b>12.9</b>	70	<b>14.3</b>	8612	<b>13.3</b>
<b>Korean</b>	353	<b>5.9</b>	7	<b>1.3</b>	284	<b>5.3</b>	14	<b>2.9</b>	3465	<b>5.4</b>
<b>Laotian</b>	12	<b>0.2</b>	1	<b>0.2</b>	10	<b>0.2</b>	.	.	116	<b>0.2</b>
<b>Micronesian (not GC)</b>	50	<b>0.8</b>	2	<b>0.4</b>	39	<b>0.7</b>	3	<b>0.6</b>	363	<b>0.6</b>
<b>Mixed Asian</b>	501	<b>8.4</b>	55	<b>10.4</b>	464	<b>8.6</b>	36	<b>7.3</b>	4955	<b>7.7</b>
<b>Mixed Pacific Islander</b>	10	<b>0.2</b>	2	<b>0.4</b>	11	<b>0.2</b>	.	.	83	<b>0.1</b>
<b>Mixed Race (2 or more)</b>	761	<b>12.8</b>	72	<b>13.7</b>	689	<b>12.8</b>	65	<b>13.3</b>	8258	<b>12.8</b>
<b>Native Hawaiian or Part-Hawn</b>	997	<b>16.8</b>	105	<b>19.9</b>	866	<b>16.1</b>	118	<b>24.1</b>	11400	<b>17.6</b>
<b>No Data</b>	65	<b>1.1</b>	1	<b>0.2</b>	69	<b>1.3</b>	2	<b>0.4</b>	985	<b>1.5</b>
<b>Other Asian</b>	34	<b>0.6</b>	2	<b>0.4</b>	35	<b>0.7</b>	2	<b>0.4</b>	386	<b>0.6</b>
<b>Other Pacific Islander</b>	12	<b>0.2</b>	.	.	12	<b>0.2</b>	1	<b>0.2</b>	204	<b>0.3</b>
<b>Samoan</b>	19	<b>0.3</b>	2	<b>0.4</b>	18	<b>0.3</b>	2	<b>0.4</b>	225	<b>0.3</b>
<b>Thai</b>	15	<b>0.3</b>	1	<b>0.2</b>	9	<b>0.2</b>	2	<b>0.4</b>	142	<b>0.2</b>
<b>Tongan</b>	12	<b>0.2</b>	.	.	11	<b>0.2</b>	.	.	95	<b>0.1</b>
<b>Vietnamese</b>	130	<b>2.2</b>	5	<b>0.9</b>	118	<b>2.2</b>	6	<b>1.2</b>	1249	<b>1.9</b>
<b>All Students</b>	5943	<b>100</b>	527	<b>100</b>	5378	<b>100</b>	490	<b>100</b>	64701	<b>100</b>

### Historical Distribution of Ethnic Groups by Population



Only groups with mean > 5% of total population are represented in chart

Figure 3

**Table 5: World Location of Online-Only Students by Semester<sup>2</sup>**

	Fall 2011				Spring 2012				Fall 2012				Spring 2013			
	Traditional		Only Online		Traditional		Only Online		Traditional		Only Online		Traditional		Only Online	
	N	%	N	%	N	%	N	%	N	%	N	%	N	%	N	%
No Data	86	1.3	2	0.4	75	1.3	3	0.6	52	0.8	6	1.1	46	0.8	6	1.1
Africa, Sub-Saharan	1	0.0	.	.	1	0.0	.	.	1	0.0	.	.	1	0.0	.	.
Oceania	34	0.5	.	.	32	0.5	.	.	32	0.5	.	.	28	0.5	.	.
Latin America & Caribbean	10	0.2	.	.	9	0.2	.	.	11	0.2	.	.	7	0.1	1	0.2
Asia	409	6.2	1	0.2	397	6.8	4	0.8	541	8.3	3	0.5	505	8.8	7	1.3
Europe	14	0.2	.	.	14	0.2	.	.	16	0.2	.	.	15	0.3	.	.
Middle East & North Africa	1	0.0	.	.	3	0.1	.	.	6	0.1	.	.	5	0.1	.	.
Military	1	0.0	.	.	1	0.0	.	.	2	0.0	.	.	2	0.0	.	.
North America	6000	91.5	541	99.4	5306	90.9	511	98.6	5848	89.8	537	98.4	5144	89.4	521	97.4
All Regions	6556	100	544	100	5838	100	518	100	6509	100	546	100	5753	100	535	100

	Fall 2013				Spring 2014				Fall 2014				Spring 2015			
	Traditional		Only Online		Traditional		Only Online		Traditional		Only Online		Traditional		Only Online	
	N	%	N	%	N	%	N	%	N	%	N	%	N	%	N	%
No Data	41	0.7	6	1.1	40	0.7	4	0.8	39	0.6	4	0.8	26	0.5	5	1.0
Africa, Sub-Saharan	2	0.0	.	.	2	0.0	.	.	2	0.0	.	.	2	0.0	.	.
Oceania	31	0.5	1	0.2	27	0.5	1	0.2	33	0.5	.	.	21	0.4	2	0.4
Latin America & Caribbean	9	0.1	1	0.2	7	0.1	1	0.2	3	0.0	.	.	3	0.1	.	.
Asia	562	9.0	3	0.6	519	9.2	3	0.6	605	10.0	2	0.4	582	10.4	1	0.2
Europe	14	0.2	.	.	18	0.3	.	.	18	0.3	.	.	17	0.3	.	.
Middle East & North Africa	1	0.0	2	0.4	1	0.0	1	0.2	1	0.0	1	0.2	1	0.0	.	.
Military	1	0.0	.	.	2	0.0	.	.	3	0.0	.	.	3	0.1	.	.
North America	5569	89.4	523	97.6	5039	89.1	504	98.1	5322	88.3	479	98.6	4938	88.3	516	98.5
All Regions	6230	100	536	100	5655	100	514	100	6026	100	486	100	5593	100	524	100

<sup>2</sup> Verbal descriptions of ODS location codes (geog\_region\_world within iro\_base) were extracted from the online ODS Data Dictionary (ODSDD). Several modifications to the online mapping were required because of overlap between location code and location code description. For example, Mexico is listed as both North America (NAM) and Latin America & Caribbean (CAM) in the ODSDD, and is here defined only as North America to avoid double counting. Additionally, Armenia is classified as Asia and not Europe, Turkey with Middle East and North Africa, and not Europe, and Papua New Guinea is Asia, not Oceania. We do not believe these mappings represent more than a small handful of cases.

**Table 5 (con't): World Location of Online-Only Students by Semester**

	Fall 2015				Spring 2016				Total	
	Traditional		Only Online		Traditional		Only Online			
	N	%	N	%	N	%	N	%	N	%
<b>No Data</b>	34	<b>0.6</b>	3	<b>0.6</b>	27	<b>0.5</b>	3	<b>0.6</b>	508	<b>0.8</b>
<b>Africa, Sub-Saharan</b>	1	<b>0.0</b>	.	.	2	<b>0.0</b>	.	.	15	<b>0.0</b>
<b>Oceania</b>	24	<b>0.4</b>	1	<b>0.2</b>	21	<b>0.4</b>	1	<b>0.2</b>	289	<b>0.4</b>
<b>Latin America &amp; Caribbean</b>	7	<b>0.1</b>	.	.	10	<b>0.2</b>	.	.	79	<b>0.1</b>
<b>Asia</b>	602	<b>10.1</b>	2	<b>0.4</b>	534	<b>9.9</b>	1	<b>0.2</b>	5283	<b>8.2</b>
<b>Europe</b>	12	<b>0.2</b>	.	.	15	<b>0.3</b>	.	.	153	<b>0.2</b>
<b>Middle East &amp; North Africa</b>	3	<b>0.1</b>	.	.	2	<b>0.0</b>	.	.	28	<b>0.0</b>
<b>Military</b>	2	<b>0.0</b>	.	.	4	<b>0.1</b>	.	.	21	<b>0.0</b>
<b>North America</b>	5258	<b>88.5</b>	521	<b>98.9</b>	4763	<b>88.6</b>	485	<b>99.0</b>	58325	<b>90.1</b>
<b>All Regions</b>	5943	<b>100</b>	527	<b>100</b>	5378	<b>100</b>	490	<b>100</b>	64701	<b>100</b>

**Table 6: US Location of Online-Only Students by Semester**

US Region	Fall 2011				Spring 2012				Fall 2012			
	Only Online		Traditional		Only Online		Traditional		Only Online		Traditional	
	N	%	N	%	N	%	N	%	N	%	N	%
Central	.	.	7	0.1%	.	.	7	0.1%	2	0.4%	2	0.0%
Midwest	4	0.7%	16	0.3%	3	0.6%	15	0.3%	4	0.7%	6	0.1%
Northeast	.	.	22	0.4%	2	0.4%	19	0.4%	1	0.2%	20	0.3%
Northwest	3	0.6%	18	0.3%	2	0.4%	14	0.3%	1	0.2%	18	0.3%
South	.	.	28	0.5%	2	0.4%	23	0.4%	3	0.6%	30	0.5%
West	534	98.7%	5901	98.0%	502	98.2%	5219	98.0%	526	98.0%	5766	98.2%
Compact of Free Association	.	.	12	0.2%	.	.	12	0.2%	.	.	8	0.1%
Military	.	.	1	0.0%	.	.	1	0.0%	.	.	2	0.0%
US Commonwealth	.	.	8	0.1%	.	.	7	0.1%	.	.	7	0.1%
US Territorial Possession	.	.	11	0.2%	.	.	10	0.2%	.	.	13	0.2%
<b>All Regions</b>	<b>541</b>	<b>100%</b>	<b>6024</b>	<b>100%</b>	<b>511</b>	<b>100%</b>	<b>5327</b>	<b>100%</b>	<b>537</b>	<b>100%</b>	<b>5872</b>	<b>100%</b>

US Region	Spring 2013				Fall 2013			
	Only Online		Traditional		Only Online		Traditional	
	N	%	N	%	N	%	N	%
Central	.	.	3	0.1%	1	0.2%	5	0.1%
Midwest	2	0.4%	10	0.2%	1	0.2%	9	0.2%
Northeast	1	0.2%	17	0.3%	2	0.4%	19	0.3%
Northwest	1	0.2%	18	0.3%	1	0.2%	19	0.3%
South	4	0.8%	18	0.3%	4	0.8%	22	0.4%
West	513	98.5%	5072	98.2%	514	98.1%	5488	98.2%
Compact of Free Association	.	.	8	0.2%	1	0.2%	6	0.1%
Military	.	.	2	0.0%	.	.	1	0.0%
US Commonwealth	.	.	7	0.1%	.	.	8	0.1%
US Territorial Possession	.	.	10	0.2%	.	.	13	0.2%
<b>All Regions</b>	<b>521</b>	<b>100%</b>	<b>5165</b>	<b>100%</b>	<b>524</b>	<b>100%</b>	<b>5590</b>	<b>100%</b>

**Table 6 (con't): US Location of Online-Only Students by Semester**

US Region	Spring 2014				Fall 2014			
	Only Online		Traditional		Only Online		Traditional	
	N	%	N	%	N	%	N	%
Central	1	0.2%	5	0.1%	.	.	12	0.2%
Midwest	.	.	4	0.1%	.	.	7	0.1%
Northeast	2	0.4%	13	0.3%	3	0.6%	15	0.3%
Northwest	2	0.4%	12	0.2%	1	0.2%	21	0.4%
South	2	0.4%	17	0.3%	2	0.4%	29	0.5%
West	496	98.4%	4982	98.5%	473	98.7%	5232	97.8%
Compact of Free Association	1	0.2%	4	0.1%	.	.	9	0.2%
Military	.	.	2	0.0%	.	.	3	0.1%
US Commonwealth	.	.	5	0.1%	.	.	5	0.1%
US Territorial Possession	.	.	14	0.3%	.	.	14	0.3%
All Regions	504	100%	5058	100%	479	100%	5347	100%

US Region	Spring 2015				Fall 2015				Spring 2016			
	Only Online		Traditional		Only Online		Traditional		Only Online		Traditional	
	N	%	N	%	N	%	N	%	N	%	N	%
Central	.	.	10	0.2%	1	0.2%	8	0.2%	.	.	7	0.1%
Midwest	.	.	5	0.1%	2	0.4%	6	0.1%	.	.	9	0.2%
Northeast	4	0.8%	10	0.2%	2	0.4%	8	0.2%	4	0.8%	13	0.3%
Northwest	4	0.8%	19	0.4%	1	0.2%	19	0.4%	4	0.8%	20	0.4%
South	5	1.0%	29	0.6%	4	0.8%	28	0.5%	4	0.8%	26	0.5%
West	503	97.1%	4858	98.1%	511	97.9%	5182	98.3%	473	97.3%	4683	98.0%
Compact of Free Association	1	0.2%	6	0.1%	1	0.2%	9	0.2%	.	.	8	0.2%
Military	.	.	3	0.1%	.	.	2	0.0%	.	.	4	0.1%
US Commonwealth	1	0.2%	3	0.1%	.	.	1	0.0%	.	.	1	0.0%
US Territorial Possession	.	.	10	0.2%	.	.	10	0.2%	1	0.2%	9	0.2%
All Regions	518	100%	4953	100%	522	100%	5273	100%	486	100%	4780	100%

**Table 7: Hawaiian Geographic Location of Online-Only Students By Semester**

	Fall 2011				Spring 2012				Fall 2012				Spring 2013			
	Traditional		Only Online		Traditional		Only Online		Traditional		Only Online		Traditional		Only Online	
	N	%	N	%	N	%	N	%	N	%	N	%	N	%	N	%
<b>Hawai'i Island</b>	191	<b>3.3</b>	20	<b>3.8</b>	156	<b>3.0</b>	14	<b>2.8</b>	173	<b>3.0</b>	12	<b>2.3</b>	139	<b>2.8</b>	19	<b>3.7</b>
<b>Kaua'i</b>	73	<b>1.3</b>	1	<b>0.2</b>	71	<b>1.4</b>	5	<b>1.0</b>	70	<b>1.2</b>	9	<b>1.7</b>	55	<b>1.1</b>	7	<b>1.4</b>
<b>Lanai</b>	11	<b>0.2</b>	2	<b>0.4</b>	10	<b>0.2</b>	2	<b>0.4</b>	12	<b>0.2</b>	1	<b>0.2</b>	11	<b>0.2</b>	2	<b>0.4</b>
<b>Maui</b>	104	<b>1.8</b>	2	<b>0.4</b>	96	<b>1.9</b>	6	<b>1.2</b>	90	<b>1.6</b>	6	<b>1.1</b>	84	<b>1.7</b>	7	<b>1.4</b>
<b>Moloka'i</b>	10	<b>0.2</b>	2	<b>0.4</b>	12	<b>0.2</b>	.	.	14	<b>0.2</b>	1	<b>0.2</b>	11	<b>0.2</b>	.	.
<b>O'ahu - East Honolulu</b>	562	<b>9.7</b>	47	<b>8.9</b>	461	<b>8.9</b>	49	<b>9.9</b>	540	<b>9.5</b>	49	<b>9.4</b>	461	<b>9.2</b>	51	<b>10.1</b>
<b>O'ahu - Honolulu</b>	3426	<b>58.9</b>	271	<b>51.5</b>	3106	<b>60.3</b>	257	<b>51.8</b>	3424	<b>60.2</b>	282	<b>54.0</b>	3032	<b>60.6</b>	254	<b>50.1</b>
<b>O'ahu Leeward</b>	995	<b>17.1</b>	123	<b>23.4</b>	870	<b>16.9</b>	106	<b>21.4</b>	946	<b>16.6</b>	114	<b>21.8</b>	841	<b>16.8</b>	116	<b>22.9</b>
<b>O'ahu - Windward</b>	446	<b>7.7</b>	58	<b>11.0</b>	373	<b>7.2</b>	57	<b>11.5</b>	421	<b>7.4</b>	48	<b>9.2</b>	373	<b>7.4</b>	51	<b>10.1</b>
<b>All Islands</b>	5818	<b>100</b>	526	<b>100</b>	5155	<b>100</b>	496	<b>100</b>	5690	<b>100</b>	522	<b>100</b>	5007	<b>100</b>	507	<b>100</b>

	Fall 2013				Spring 2014				Fall 2014				Spring 2015			
	Traditional		Only Online		Traditional		Only Online		Traditional		Only Online		Traditional		Only Online	
	N	%	N	%	N	%	N	%	N	%	N	%	N	%	N	%
<b>Hawai'i Island</b>	138	<b>2.6</b>	16	<b>3.1</b>	119	<b>2.4</b>	29	<b>5.9</b>	91	<b>1.8</b>	20	<b>4.3</b>	96	<b>2.0</b>	16	<b>3.2</b>
<b>Kaua'i</b>	63	<b>1.2</b>	5	<b>1.0</b>	63	<b>1.3</b>	6	<b>1.2</b>	50	<b>1.0</b>	4	<b>0.9</b>	43	<b>0.9</b>	4	<b>0.8</b>
<b>Lanai</b>	12	<b>0.2</b>	1	<b>0.2</b>	8	<b>0.2</b>	1	<b>0.2</b>	9	<b>0.2</b>	2	<b>0.4</b>	5	<b>0.1</b>	2	<b>0.4</b>
<b>Maui</b>	102	<b>1.9</b>	9	<b>1.8</b>	84	<b>1.7</b>	9	<b>1.8</b>	78	<b>1.5</b>	15	<b>3.2</b>	77	<b>1.6</b>	8	<b>1.6</b>
<b>Moloka'i</b>	13	<b>0.2</b>	.	.	9	<b>0.2</b>	2	<b>0.4</b>	11	<b>0.2</b>	2	<b>0.4</b>	7	<b>0.1</b>	.	.
<b>O'ahu - East Honolulu</b>	492	<b>9.1</b>	35	<b>6.9</b>	449	<b>9.1</b>	48	<b>9.8</b>	486	<b>9.4</b>	42	<b>9.0</b>	447	<b>9.3</b>	53	<b>10.7</b>
<b>O'ahu - Honolulu</b>	3304	<b>61.3</b>	268	<b>52.8</b>	3068	<b>62.4</b>	248	<b>50.5</b>	3243	<b>63.0</b>	245	<b>52.6</b>	3055	<b>63.7</b>	264	<b>53.1</b>
<b>O'ahu Leeward</b>	856	<b>15.9</b>	119	<b>23.4</b>	777	<b>15.8</b>	99	<b>20.2</b>	808	<b>15.7</b>	92	<b>19.7</b>	721	<b>15.0</b>	110	<b>22.1</b>
<b>O'ahu - Windward</b>	413	<b>7.7</b>	55	<b>10.8</b>	342	<b>7.0</b>	49	<b>10.0</b>	374	<b>7.3</b>	44	<b>9.4</b>	346	<b>7.2</b>	40	<b>8.0</b>
<b>All Islands</b>	5393	<b>100</b>	508	<b>100</b>	4919	<b>100</b>	491	<b>100</b>	5150	<b>100</b>	466	<b>100</b>	4797	<b>100</b>	497	<b>100</b>

**Table 7 (con't): Hawaiian Geographic Location of Online-Only Students By Semester**

	Fall 2015				Spring 2016				Total	
	Traditional		Only Online		Traditional		Only Online			
	N	%	N	%	N	%	N	%	N	%
<b>Hawai'i Island</b>	67	<b>1.3</b>	16	<b>3.2</b>	64	<b>1.4</b>	10	<b>2.1</b>	1406	<b>2.5</b>
<b>Kaua'i</b>	52	<b>1.0</b>	1	<b>0.2</b>	37	<b>0.8</b>	4	<b>0.9</b>	623	<b>1.1</b>
<b>Lanai</b>	16	<b>0.3</b>	.	.	13	<b>0.3</b>	1	<b>0.2</b>	121	<b>0.2</b>
<b>Maui</b>	75	<b>1.5</b>	9	<b>1.8</b>	73	<b>1.6</b>	7	<b>1.5</b>	941	<b>1.7</b>
<b>Moloka'i</b>	7	<b>0.1</b>	1	<b>0.2</b>	8	<b>0.2</b>	.	.	110	<b>0.2</b>
<b>O'ahu - East Honolulu</b>	486	<b>9.5</b>	42	<b>8.3</b>	432	<b>9.3</b>	47	<b>10.0</b>	5279	<b>9.3</b>
<b>O'ahu - Honolulu</b>	3256	<b>63.8</b>	272	<b>53.9</b>	2981	<b>64.5</b>	260	<b>55.3</b>	34516	<b>60.9</b>
<b>O'ahu Leeward</b>	781	<b>15.3</b>	118	<b>23.4</b>	692	<b>15.0</b>	95	<b>20.2</b>	9379	<b>16.6</b>
<b>O'ahu - Windward</b>	366	<b>7.2</b>	46	<b>9.1</b>	324	<b>7.0</b>	46	<b>9.8</b>	4272	<b>7.5</b>
<b>All Islands</b>	5106	<b>100</b>	505	<b>100</b>	4624	<b>100</b>	470	<b>100</b>	56647	<b>100</b>



## 2.1 Academics

**Table 8: Student Type of Online-Only Students By Semester**

	Fall 2011				Spring 2012				Fall 2012				Spring 2013			
	Traditional		Only Online		Traditional		Only Online		Traditional		Only Online		Traditional		Only Online	
	N	%	N	%	N	%	N	%	N	%	N	%	N	%	N	%
<b>Continuing</b>	3920	<b>59.8</b>	320	<b>58.8</b>	4639	<b>79.5</b>	377	<b>72.8</b>	3728	<b>57.3</b>	301	<b>55.1</b>	4596	<b>79.9</b>	357	<b>66.7</b>
<b>First-Time Freshman</b>	1232	<b>18.8</b>	15	<b>2.8</b>	341	<b>5.8</b>	9	<b>1.7</b>	1375	<b>21.1</b>	14	<b>2.6</b>	315	<b>5.5</b>	3	<b>0.6</b>
<b>Other</b>	70	<b>1.1</b>	5	<b>0.9</b>	49	<b>0.8</b>	1	<b>0.2</b>	77	<b>1.2</b>	4	<b>0.7</b>	67	<b>1.2</b>	6	<b>1.1</b>
<b>Returning</b>	392	<b>6.0</b>	60	<b>11.0</b>	241	<b>4.1</b>	32	<b>6.2</b>	381	<b>5.9</b>	69	<b>12.6</b>	246	<b>4.3</b>	46	<b>8.6</b>
<b>Incoming Transfer</b>	942	<b>14.4</b>	144	<b>26.5</b>	568	<b>9.7</b>	99	<b>19.1</b>	948	<b>14.6</b>	158	<b>28.9</b>	529	<b>9.2</b>	123	<b>23.0</b>
<b>All Students</b>	6556	<b>100</b>	544	<b>100</b>	5838	<b>100</b>	518	<b>100</b>	6509	<b>100</b>	546	<b>100</b>	5753	<b>100</b>	535	<b>100</b>

	Fall 2013				Spring 2014				Fall 2014				Spring 2015			
	Traditional		Only Online		Traditional		Only Online		Traditional		Only Online		Traditional		Only Online	
	N	%	N	%	N	%	N	%	N	%	N	%	N	%	N	%
<b>Continuing</b>	3567	<b>57.3</b>	313	<b>58.4</b>	4515	<b>79.8</b>	328	<b>63.8</b>	3447	<b>57.2</b>	287	<b>59.1</b>	4255	<b>76.1</b>	328	<b>62.6</b>
<b>First-Time Freshman</b>	1290	<b>20.7</b>	16	<b>3.0</b>	311	<b>5.5</b>	8	<b>1.6</b>	1251	<b>20.8</b>	12	<b>2.5</b>	367	<b>6.6</b>	9	<b>1.7</b>
<b>Other</b>	67	<b>1.1</b>	.	.	58	<b>1.0</b>	6	<b>1.2</b>	82	<b>1.4</b>	1	<b>0.2</b>	108	<b>1.9</b>	5	<b>1.0</b>
<b>Returning</b>	389	<b>6.2</b>	61	<b>11.4</b>	251	<b>4.4</b>	53	<b>10.3</b>	377	<b>6.3</b>	56	<b>11.5</b>	271	<b>4.8</b>	67	<b>12.8</b>
<b>Incoming Transfer</b>	917	<b>14.7</b>	146	<b>27.2</b>	520	<b>9.2</b>	119	<b>23.2</b>	869	<b>14.4</b>	130	<b>26.7</b>	592	<b>10.6</b>	115	<b>21.9</b>
<b>All Students</b>	6230	<b>100</b>	536	<b>100</b>	5655	<b>100</b>	514	<b>100</b>	6026	<b>100</b>	486	<b>100</b>	5593	<b>100</b>	524	<b>100</b>

	Fall 2015				Spring 2016				Total	
	Traditional		Only Online		Traditional		Only Online		N	%
	N	%	N	%	N	%	N	%		
<b>Continuing</b>	3322	<b>55.9</b>	283	<b>53.7</b>	4153	<b>77.2</b>	321	<b>65.5</b>	43357	<b>67.0</b>
<b>First-Time Freshman</b>	1240	<b>20.9</b>	20	<b>3.8</b>	275	<b>5.1</b>	4	<b>0.8</b>	8107	<b>12.5</b>
<b>Other</b>	147	<b>2.5</b>	3	<b>0.6</b>	123	<b>2.3</b>	15	<b>3.1</b>	894	<b>1.4</b>
<b>Returning</b>	363	<b>6.1</b>	57	<b>10.8</b>	229	<b>4.3</b>	45	<b>9.2</b>	3686	<b>5.7</b>
<b>Incoming Transfer</b>	871	<b>14.7</b>	164	<b>31.1</b>	598	<b>11.1</b>	105	<b>21.4</b>	8657	<b>13.4</b>
<b>All Students</b>	5943	<b>100</b>	527	<b>100</b>	5378	<b>100</b>	490	<b>100</b>	64701	<b>100</b>

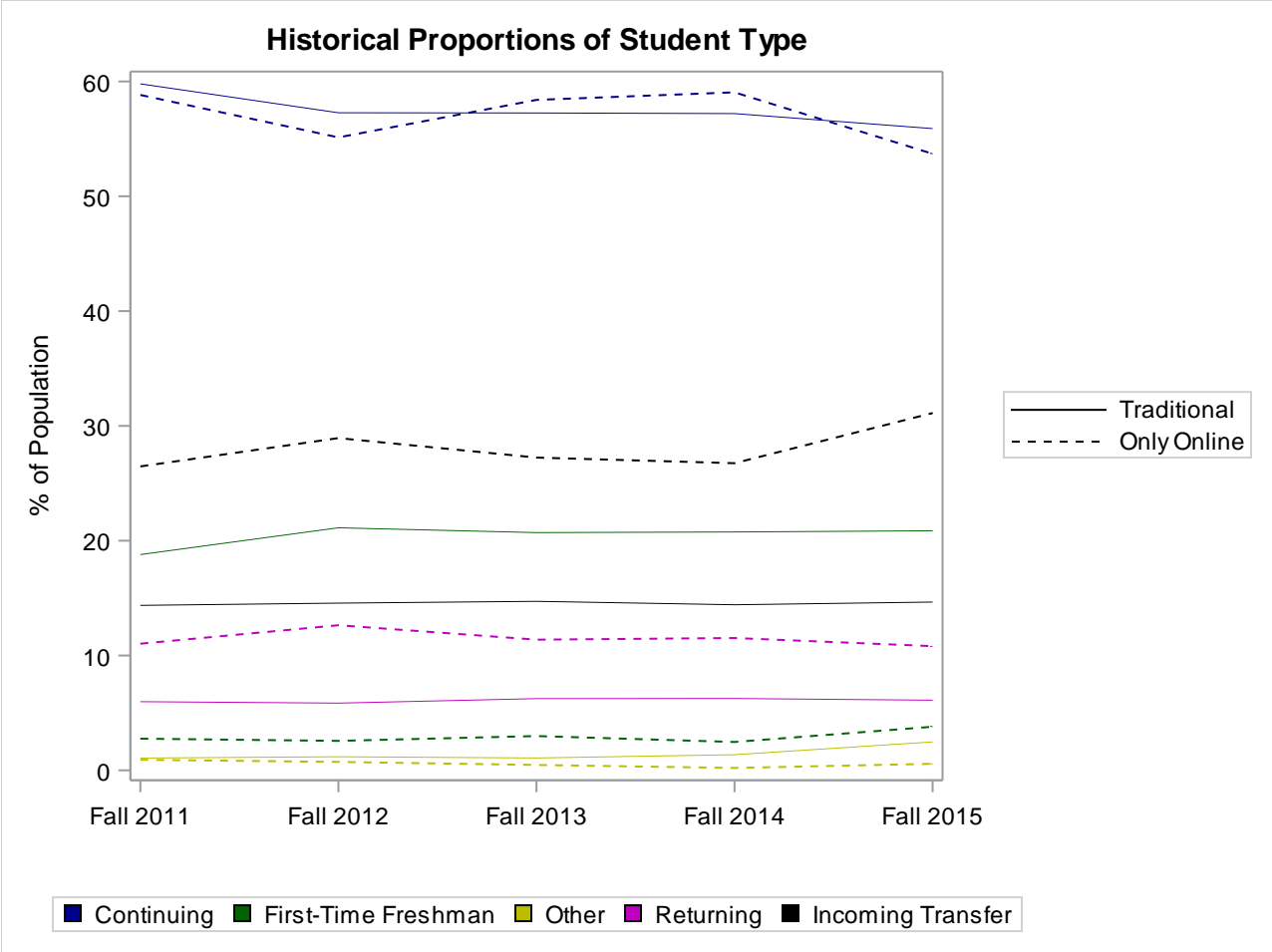


Figure 5

**Table 9: Summary of Online-Only Student GPA By Semester**

		GPA			
		N	Mean	StdDev	IQR
Fall 2011	Traditional	6157	2.62	1.24	1.67
	Only Online	528	2.32	1.53	3.00
Spring 2012	Traditional	5462	2.67	1.21	1.67
	Only Online	479	2.40	1.51	3.00
Fall 2012	Traditional	6056	2.60	1.24	1.57
	Only Online	535	2.30	1.57	3.50
Spring 2013	Traditional	5401	2.65	1.24	1.67
	Only Online	522	2.50	1.53	2.67
Fall 2013	Traditional	5859	2.63	1.22	1.60
	Only Online	531	2.51	1.49	2.50
Spring 2014	Traditional	5287	2.68	1.23	1.69
	Only Online	534	2.50	1.53	3.00
Fall 2014	Traditional	5624	2.62	1.22	1.58
	Only Online	505	2.36	1.50	3.00
Spring 2015	Traditional	5223	2.73	1.19	1.70
	Only Online	537	2.55	1.50	2.67
Fall 2015	Traditional	5483	2.64	1.20	1.60
	Only Online	535	2.53	1.43	2.50
All	Traditional	50552	2.65	1.22	1.67
	Only Online	4706	2.44	1.51	3.00

Min/Max Equal to 0.0/4.0 with Median=3.0 for each group

**Table 10: GPA Distribution of Online-Only Students By Semester**

GPA	Fall 2011				Spring 2012				Fall 2012				Spring 2013			
	Traditional		Only Online		Traditional		Only Online		Traditional		Only Online		Traditional		Only Online	
	N	%	N	%	N	%	N	%	N	%	N	%	N	%	N	%
<b>0 - .99</b>	782	<b>12.7</b>	128	<b>24.2</b>	610	<b>11.2</b>	110	<b>23.0</b>	782	<b>12.9</b>	141	<b>26.4</b>	670	<b>12.4</b>	117	<b>22.4</b>
<b>1.0 - 1.5</b>	336	<b>5.5</b>	32	<b>6.1</b>	282	<b>5.2</b>	24	<b>5.0</b>	335	<b>5.5</b>	25	<b>4.7</b>	272	<b>5.0</b>	17	<b>3.3</b>
<b>1.5 - 2.0</b>	287	<b>4.7</b>	20	<b>3.8</b>	241	<b>4.4</b>	13	<b>2.7</b>	317	<b>5.2</b>	19	<b>3.6</b>	265	<b>4.9</b>	11	<b>2.1</b>
<b>2.0 - 2.5</b>	763	<b>12.4</b>	47	<b>8.9</b>	742	<b>13.6</b>	54	<b>11.3</b>	784	<b>12.9</b>	54	<b>10.1</b>	700	<b>13.0</b>	50	<b>9.6</b>
<b>2.5 - 3.0</b>	666	<b>10.8</b>	29	<b>5.5</b>	614	<b>11.2</b>	23	<b>4.8</b>	650	<b>10.7</b>	19	<b>3.6</b>	550	<b>10.2</b>	21	<b>4.0</b>
<b>3.0 - 3.5</b>	1372	<b>22.3</b>	93	<b>17.6</b>	1218	<b>22.3</b>	86	<b>18.0</b>	1306	<b>21.6</b>	97	<b>18.1</b>	1147	<b>21.2</b>	99	<b>19.0</b>
<b>3.5 - 4.0</b>	1951	<b>31.7</b>	179	<b>33.9</b>	1755	<b>32.1</b>	169	<b>35.3</b>	1882	<b>31.1</b>	180	<b>33.6</b>	1797	<b>33.3</b>	207	<b>39.7</b>
<b>All Students</b>	6157	<b>100</b>	528	<b>100</b>	5462	<b>100</b>	479	<b>100</b>	6056	<b>100</b>	535	<b>100</b>	5401	<b>100</b>	522	<b>100</b>

GPA	Fall 2013				Spring 2014				Fall 2014				Spring 2015			
	Traditional		Only Online		Traditional		Only Online		Traditional		Only Online		Traditional		Only Online	
	N	%	N	%	N	%	N	%	N	%	N	%	N	%	N	%
<b>0 - .99</b>	710	<b>12.1</b>	110	<b>20.7</b>	624	<b>11.8</b>	120	<b>22.5</b>	682	<b>12.1</b>	115	<b>22.8</b>	538	<b>10.3</b>	106	<b>19.7</b>
<b>1.0 - 1.5</b>	301	<b>5.1</b>	18	<b>3.4</b>	273	<b>5.2</b>	25	<b>4.7</b>	328	<b>5.8</b>	28	<b>5.5</b>	256	<b>4.9</b>	29	<b>5.4</b>
<b>1.5 - 2.0</b>	343	<b>5.9</b>	18	<b>3.4</b>	271	<b>5.1</b>	10	<b>1.9</b>	330	<b>5.9</b>	10	<b>2.0</b>	254	<b>4.9</b>	18	<b>3.4</b>
<b>2.0 - 2.5</b>	732	<b>12.5</b>	63	<b>11.9</b>	624	<b>11.8</b>	48	<b>9.0</b>	684	<b>12.2</b>	62	<b>12.3</b>	662	<b>12.7</b>	47	<b>8.8</b>
<b>2.5 - 3.0</b>	643	<b>11.0</b>	22	<b>4.1</b>	549	<b>10.4</b>	24	<b>4.5</b>	608	<b>10.8</b>	30	<b>5.9</b>	531	<b>10.2</b>	21	<b>3.9</b>
<b>3.0 - 3.5</b>	1289	<b>22.0</b>	86	<b>16.2</b>	1171	<b>22.1</b>	99	<b>18.5</b>	1254	<b>22.3</b>	93	<b>18.4</b>	1201	<b>23.0</b>	100	<b>18.6</b>
<b>3.5 - 4.0</b>	1841	<b>31.4</b>	214	<b>40.3</b>	1775	<b>33.6</b>	208	<b>39.0</b>	1738	<b>30.9</b>	167	<b>33.1</b>	1781	<b>34.1</b>	216	<b>40.2</b>
<b>All Students</b>	5859	<b>100</b>	531	<b>100</b>	5287	<b>100</b>	534	<b>100</b>	5624	<b>100</b>	505	<b>100</b>	5223	<b>100</b>	537	<b>100</b>

GPA	Fall 2015					
	Traditional		Only Online		All Years	
	N	%	N	%	N	%
<b>0 - .99</b>	619	<b>11.3</b>	99	<b>18.5</b>	7063	<b>12.8</b>
<b>1.0 - 1.5</b>	317	<b>5.8</b>	27	<b>5.0</b>	2925	<b>5.3</b>
<b>1.5 - 2.0</b>	301	<b>5.5</b>	20	<b>3.7</b>	2748	<b>5.0</b>
<b>2.0 - 2.5</b>	718	<b>13.1</b>	63	<b>11.8</b>	6897	<b>12.5</b>
<b>2.5 - 3.0</b>	615	<b>11.2</b>	21	<b>3.9</b>	5636	<b>10.2</b>
<b>3.0 - 3.5</b>	1210	<b>22.1</b>	102	<b>19.1</b>	12023	<b>21.8</b>
<b>3.5 - 4.0</b>	1703	<b>31.1</b>	203	<b>37.9</b>	17966	<b>32.5</b>

	Fall 2015				All Years	
	Traditional		Only Online			
	N	%	N	%	N	%
<b>All Students</b>	5483	<b>100</b>	535	<b>100</b>	55258	<b>100</b>

Grade ranges are left-inclusive

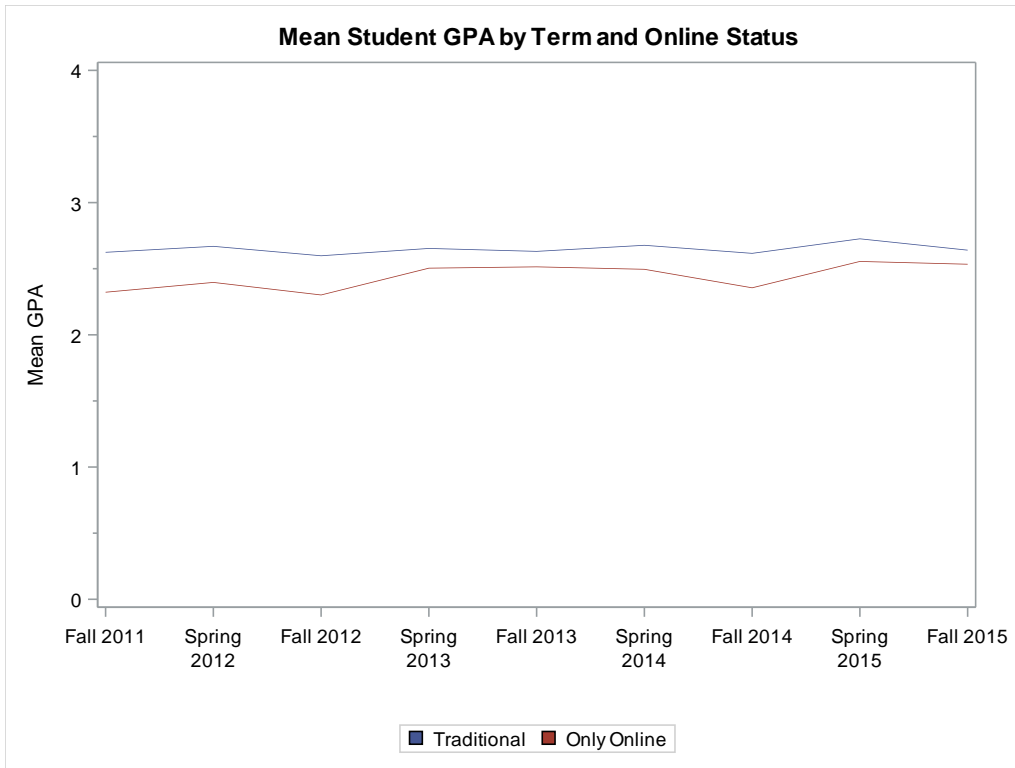


Figure 6

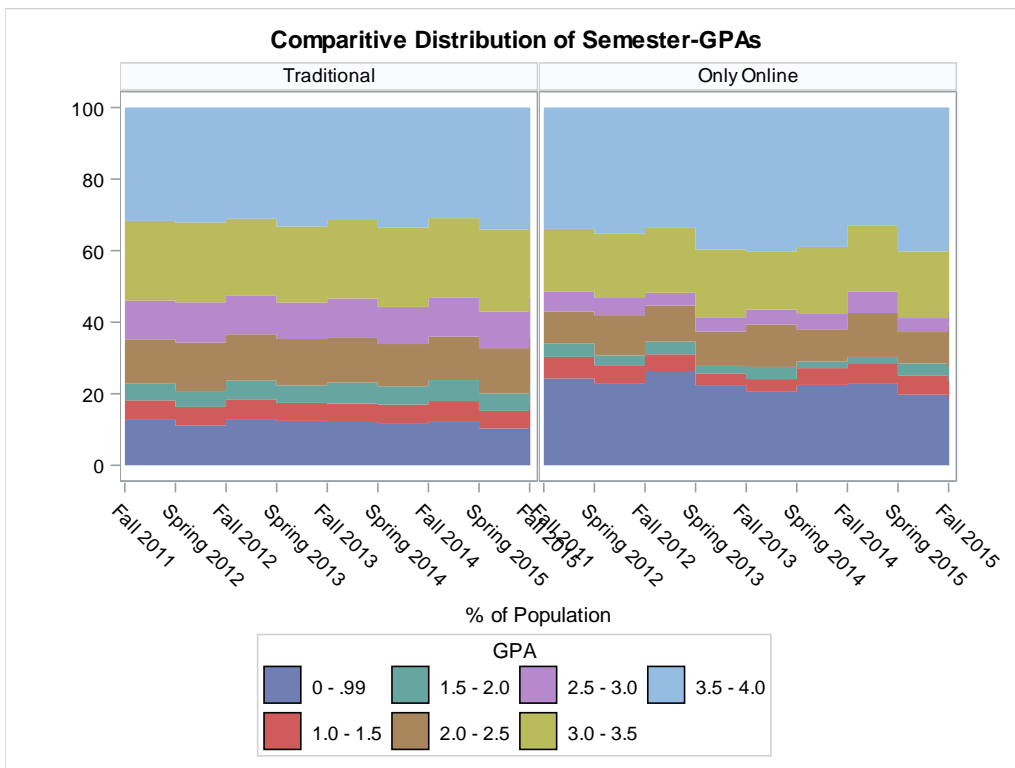


Figure 7

**Table 11: Summary of Credit Loads for Online-Only Students By Semester**

		Credit Load					
		N	Mean	StdDev	Median	Min	Max
Fall 2011	Traditional	6583	9.52	3.96	10.00	1.00	23.00
	Only Online	601	5.89	3.35	6.00	1.00	17.00
Spring 2012	Traditional	5851	9.70	4.01	10.00	1.00	22.00
	Only Online	567	6.15	3.56	6.00	1.00	18.00
Fall 2012	Traditional	6504	9.67	3.95	10.00	1.00	22.00
	Only Online	598	6.20	3.62	6.00	1.00	18.00
Spring 2013	Traditional	5791	9.71	3.98	10.00	1.00	22.00
	Only Online	588	5.93	3.40	6.00	1.00	19.00
Fall 2013	Traditional	6246	9.94	3.93	11.00	1.00	23.00
	Only Online	594	6.31	3.70	6.00	1.00	18.00
Spring 2014	Traditional	5673	9.77	4.10	10.00	1.00	22.00
	Only Online	586	6.25	3.51	6.00	1.00	18.00
Fall 2014	Traditional	6063	9.81	3.97	10.00	1.00	21.00
	Only Online	564	6.32	3.65	6.00	1.00	19.00
Spring 2015	Traditional	5651	9.69	4.10	10.00	1.00	24.00
	Only Online	612	6.23	3.64	6.00	1.00	18.00
Fall 2015	Traditional	5965	9.87	4.04	11.00	1.00	25.00
	Only Online	609	6.48	3.75	6.00	1.00	18.00
All	Traditional	54327	9.74	4.00	10.00	1.00	25.00
	Only Online	5319	6.19	3.58	6.00	1.00	19.00

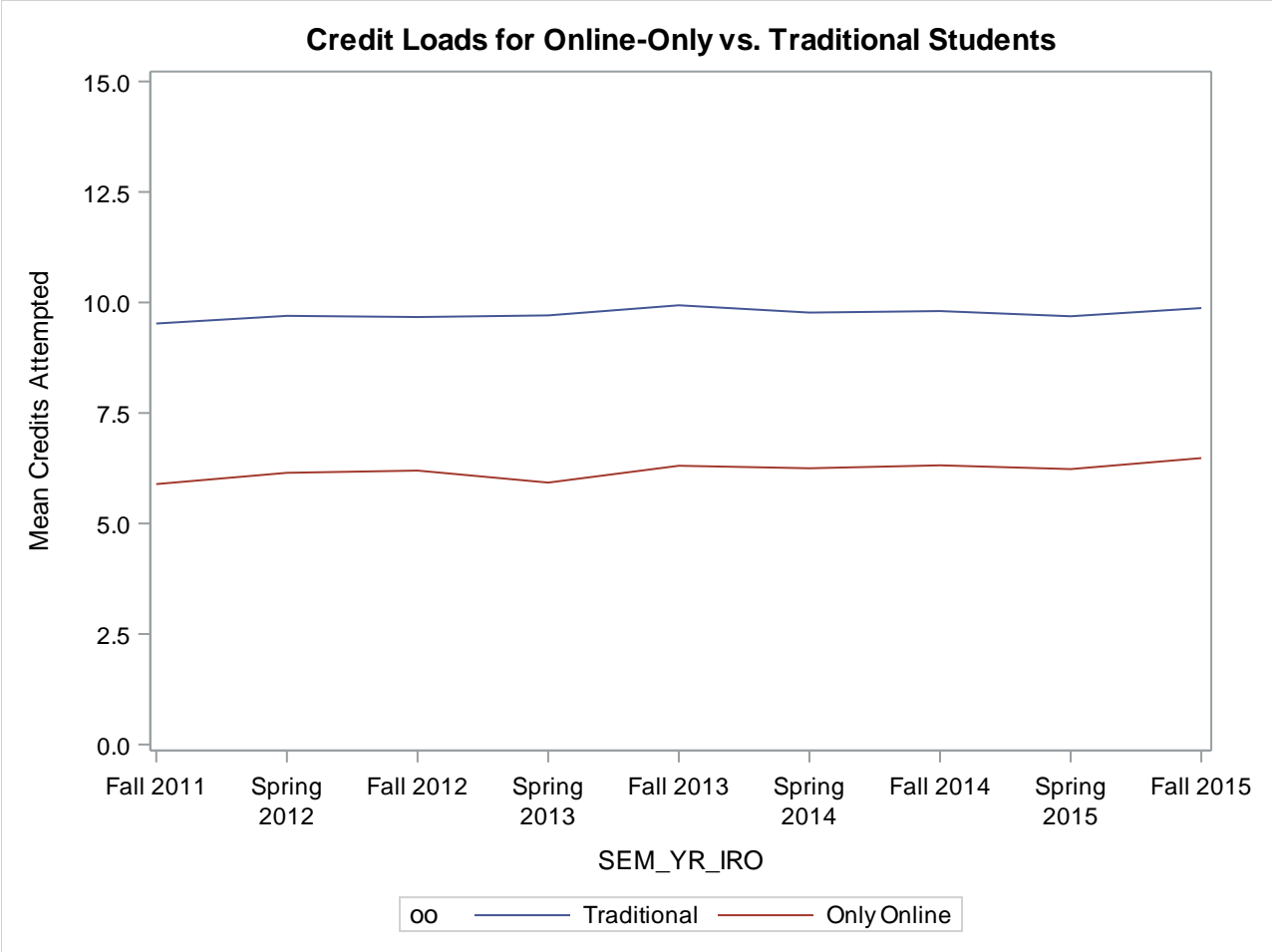


Figure 8



**Table 12: Course Success Distribution of Only-Online Students By Semester**

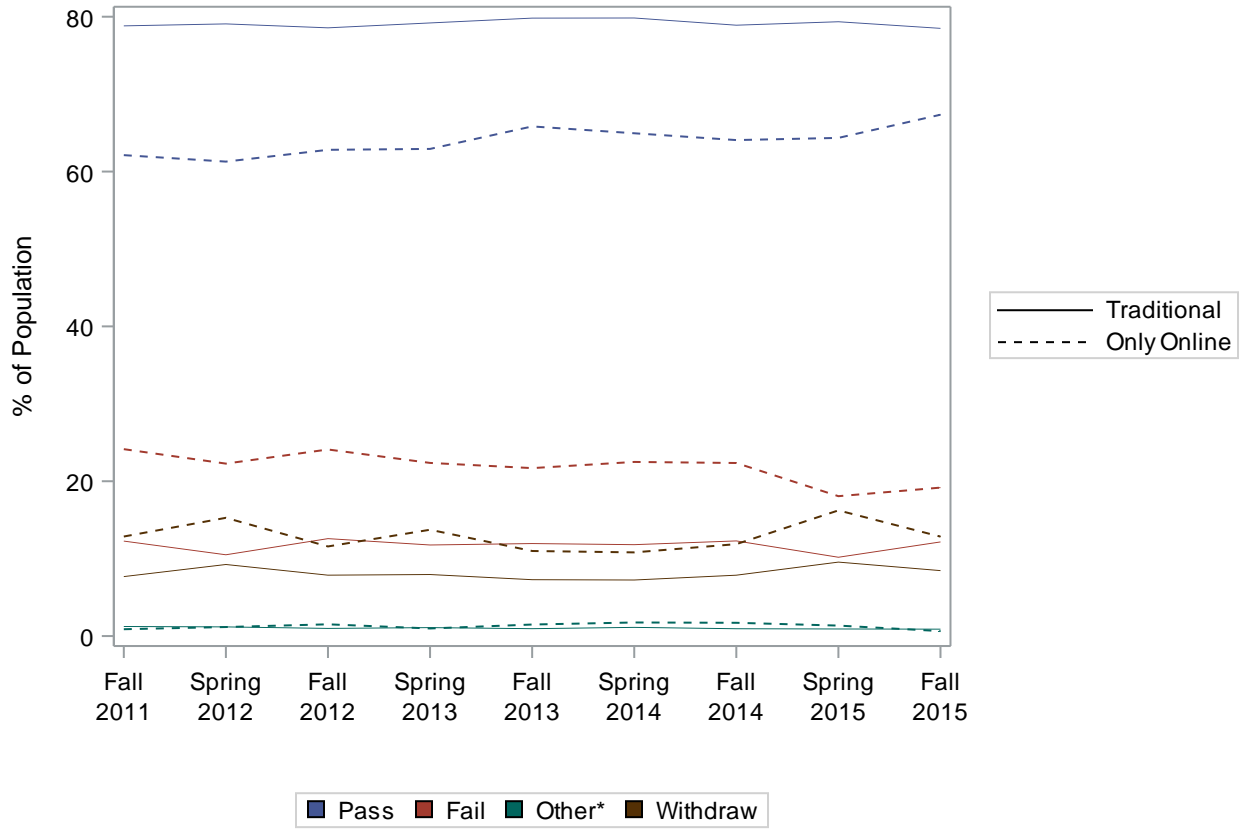
		Course Outcome			
		Success		Non-Success	
		N	%	N	%
Fall 2011	Traditional	30839	<b>72.6</b>	11662	<b>27.4</b>
	Only Online	1162	<b>56.3</b>	902	<b>43.7</b>
Spring 2012	Traditional	28010	<b>73.0</b>	10384	<b>27.0</b>
	Only Online	1180	<b>56.5</b>	910	<b>43.5</b>
Fall 2012	Traditional	30825	<b>72.5</b>	11720	<b>27.5</b>
	Only Online	1220	<b>57.0</b>	922	<b>43.0</b>
Spring 2013	Traditional	27983	<b>73.2</b>	10227	<b>26.8</b>
	Only Online	1217	<b>58.7</b>	856	<b>41.3</b>
Fall 2013	Traditional	30755	<b>73.5</b>	11106	<b>26.5</b>
	Only Online	1334	<b>60.9</b>	856	<b>39.1</b>
Spring 2014	Traditional	27846	<b>73.9</b>	9832	<b>26.1</b>
	Only Online	1280	<b>60.8</b>	824	<b>39.2</b>
Fall 2014	Traditional	29163	<b>72.6</b>	11015	<b>27.4</b>
	Only Online	1140	<b>58.9</b>	794	<b>41.1</b>
Spring 2015	Traditional	27230	<b>73.9</b>	9634	<b>26.1</b>
	Only Online	1216	<b>57.6</b>	896	<b>42.4</b>
Fall 2015	Traditional	28721	<b>72.6</b>	10835	<b>27.4</b>
	Only Online	1338	<b>60.8</b>	864	<b>39.2</b>
Total	Traditional	261372	<b>73.1</b>	96415	<b>26.9</b>
	Only Online	11087	<b>58.6</b>	7824	<b>41.4</b>

**Table 13: Course Outcome Distribution of Only-Online Students By Semester**

		Course Outcome								All Students	
		Pass		Fail		Other*		Withdraw			
		N	%	N	%	N	%	N	%		
Fall 2011	Traditional	32125	<b>78.8</b>	5000	<b>12.3</b>	503	<b>1.2</b>	3131	<b>7.7</b>	40759	<b>100</b>
	Only Online	1266	<b>62.1</b>	492	<b>24.1</b>	18	<b>0.9</b>	262	<b>12.9</b>	2038	<b>100</b>
Spring 2012	Traditional	29034	<b>79.1</b>	3855	<b>10.5</b>	435	<b>1.2</b>	3394	<b>9.2</b>	36718	<b>100</b>
	Only Online	1260	<b>61.3</b>	458	<b>22.3</b>	24	<b>1.2</b>	314	<b>15.3</b>	2056	<b>100</b>
Fall 2012	Traditional	32198	<b>78.6</b>	5158	<b>12.6</b>	405	<b>1.0</b>	3223	<b>7.9</b>	40984	<b>100</b>
	Only Online	1324	<b>62.8</b>	508	<b>24.1</b>	32	<b>1.5</b>	244	<b>11.6</b>	2108	<b>100</b>
Spring 2013	Traditional	29152	<b>79.2</b>	4330	<b>11.8</b>	402	<b>1.1</b>	2926	<b>7.9</b>	36810	<b>100</b>
	Only Online	1283	<b>62.9</b>	456	<b>22.4</b>	20	<b>1.0</b>	280	<b>13.7</b>	2039	<b>100</b>
Fall 2013	Traditional	32185	<b>79.8</b>	4818	<b>11.9</b>	384	<b>1.0</b>	2936	<b>7.3</b>	40323	<b>100</b>
	Only Online	1414	<b>65.8</b>	466	<b>21.7</b>	32	<b>1.5</b>	236	<b>11.0</b>	2148	<b>100</b>
Spring 2014	Traditional	29080	<b>79.8</b>	4300	<b>11.8</b>	408	<b>1.1</b>	2637	<b>7.2</b>	36425	<b>100</b>
	Only Online	1334	<b>64.9</b>	462	<b>22.5</b>	36	<b>1.8</b>	222	<b>10.8</b>	2054	<b>100</b>
Fall 2014	Traditional	30550	<b>78.9</b>	4758	<b>12.3</b>	366	<b>0.9</b>	3044	<b>7.9</b>	38718	<b>100</b>
	Only Online	1198	<b>64.1</b>	418	<b>22.4</b>	32	<b>1.7</b>	222	<b>11.9</b>	1870	<b>100</b>
Spring 2015	Traditional	28185	<b>79.4</b>	3616	<b>10.2</b>	325	<b>0.9</b>	3393	<b>9.6</b>	35519	<b>100</b>
	Only Online	1332	<b>64.3</b>	374	<b>18.1</b>	28	<b>1.4</b>	336	<b>16.2</b>	2070	<b>100</b>
Fall 2015	Traditional	29948	<b>78.5</b>	4639	<b>12.2</b>	340	<b>0.9</b>	3225	<b>8.5</b>	38152	<b>100</b>
	Only Online	1468	<b>67.3</b>	418	<b>19.2</b>	14	<b>0.6</b>	280	<b>12.8</b>	2180	<b>100</b>
Total	Traditional	272457	<b>79.1</b>	40474	<b>11.8</b>	3568	<b>1.0</b>	27909	<b>8.1</b>	344408	<b>100</b>
	Only Online	11879	<b>64.0</b>	4052	<b>21.8</b>	236	<b>1.3</b>	2396	<b>12.9</b>	18563	<b>100</b>

\*Standard Letter A-F Courses. 'No Grade', 'Incomplete', and 'Record Delayed' Counted as 'Other'

### Historical Course Outcomes for Only Online vs Traditional Students



\*Standard Letter A-F Courses. 'No Grade', 'Incomplete', and 'Record Delayed' Counted as 'Other'

Figure 9

**Table 14: Proportion of Home-Based, Online-Only KCC Students Taking All Courses at Remote Campuses**

	Not KAP		KAP		All	
	N	%	N	%	N	%
<b>Fall 2011</b>	56	<b>10.3</b>	488	<b>89.7</b>	544	<b>100</b>
<b>Spring 2012</b>	37	<b>7.1</b>	481	<b>92.9</b>	518	<b>100</b>
<b>Fall 2012</b>	48	<b>8.8</b>	498	<b>91.2</b>	546	<b>100</b>
<b>Spring 2013</b>	64	<b>12.0</b>	471	<b>88.0</b>	535	<b>100</b>
<b>Fall 2013</b>	59	<b>11.0</b>	477	<b>89.0</b>	536	<b>100</b>
<b>Spring 2014</b>	55	<b>10.7</b>	459	<b>89.3</b>	514	<b>100</b>
<b>Fall 2014</b>	64	<b>13.2</b>	422	<b>86.8</b>	486	<b>100</b>
<b>Spring 2015</b>	68	<b>13.0</b>	456	<b>87.0</b>	524	<b>100</b>
<b>Fall 2015</b>	71	<b>13.5</b>	456	<b>86.5</b>	527	<b>100</b>
<b>Spring 2016</b>	68	<b>13.9</b>	422	<b>86.1</b>	490	<b>100</b>
<b>All</b>	590	<b>11.3</b>	4630	<b>88.7</b>	5220	<b>100</b>

**Table 15: Kapi'olani Community College Reenrollment for from Fall to Subsequent Spring  
For Only-Online Students**

	Fall 2011				Fall 2012				Fall 2013			
	Traditional		Only Online		Traditional		Only Online		Traditional		Only Online	
	N	%	N	%	N	%	N	%	N	%	N	%
<b>Fall Headcount (enrolled and home-based at KCC)</b>	6,556	<b>100</b>	488	<b>100</b>	6,509	<b>100</b>	498	<b>100</b>	6,230	<b>100</b>	477	<b>100</b>
<b>Revised Fall Headcount (excluding Graduates and/or UH 4-yr Transfers)</b>	6,151	<b>93.8</b>	468	<b>95.9</b>	6,090	<b>93.6</b>	470	<b>94.4</b>	5,886	<b>94.5</b>	446	<b>93.5</b>
<b>Subsequent Spring Reenrollment (continued enrollment and home-based at KCC)</b>	4,656	<b>75.7</b>	223	<b>47.6</b>	4,620	<b>75.9</b>	240	<b>51.1</b>	4,511	<b>76.6</b>	227	<b>50.9</b>
<b>Graduated and/or Transferred</b>	405	<b>6.2</b>	20	<b>4.1</b>	419	<b>6.4</b>	28	<b>5.6</b>	344	<b>5.5</b>	31	<b>6.5</b>
<b>Graduates (any award and no subsequent reenrollment)</b>	179	<b>2.7</b>	12	<b>2.5</b>	174	<b>2.7</b>	17	<b>3.4</b>	132	<b>2.1</b>	18	<b>3.8</b>
<b>Transfers to UH 4-yr Institutions</b>	144	<b>2.2</b>	5	<b>1.0</b>	159	<b>2.4</b>	9	<b>1.8</b>	156	<b>2.5</b>	11	<b>2.3</b>
<b>Graduated and Transferred</b>	82	<b>1.3</b>	3	<b>0.6</b>	86	<b>1.3</b>	2	<b>0.4</b>	56	<b>0.9</b>	2	<b>0.4</b>

	Fall 2014				Fall 2015			
	Traditional		Only Online		Traditional		Only Online	
	N	%	N	%	N	%	N	%
<b>Fall Headcount (enrolled and home-based at KCC)</b>	6,026	<b>100</b>	422	<b>100</b>	5,943	<b>100</b>	456	<b>100</b>
<b>Revised Fall Headcount (excluding Graduates and/or UH 4-yr Transfers)</b>	5,648	<b>93.7</b>	407	<b>96.4</b>	5,605	<b>94.3</b>	443	<b>97.1</b>
<b>Subsequent Spring Reenrollment (continued enrollment and home-based at KCC)</b>	4,345	<b>76.9</b>	211	<b>51.8</b>	4,295	<b>76.6</b>	251	<b>56.7</b>
<b>Graduated and/or Transferred</b>	378	<b>6.3</b>	15	<b>3.6</b>	338	<b>5.7</b>	13	<b>2.9</b>
<b>Graduates (any award and no subsequent reenrollment)</b>	148	<b>2.5</b>	6	<b>1.4</b>	127	<b>2.1</b>	2	<b>0.4</b>
<b>Transfers to UH 4-yr Institutions</b>	148	<b>2.5</b>	9	<b>2.1</b>	147	<b>2.5</b>	11	<b>2.4</b>
<b>Graduated and Transferred</b>	82	<b>1.4</b>	0	<b>0.0</b>	64	<b>1.1</b>	0	<b>0.0</b>

Shaded row indicates Kapi'olani Institutional Effectiveness Measure  
Excludes Students Home-Based at KCC but Enrolled Elsewhere in UH System

**Table 16: Kapi'olani Community College Reenrollment for from Fall to Next Fall  
For Only-Online Students**

	Fall 2011				Fall 2012				Fall 2013			
	Traditional		Only Online		Traditional		Only Online		Traditional		Only Online	
	N	%	N	%	N	%	N	%	N	%	N	%
<b>Fall Headcount (enrolled and home-based at KCC)</b>	6,556	<b>100</b>	488	<b>100</b>	6,509	<b>100</b>	498	<b>100</b>	6,230	<b>100</b>	477	<b>100</b>
<b>Revised Fall Headcount (excluding Graduates and/or UH 4-yr Transfers)</b>	5,384	<b>82.1</b>	443	<b>90.8</b>	5,319	<b>81.7</b>	443	<b>89.0</b>	5,159	<b>82.8</b>	406	<b>85.1</b>
<b>Next Fall Reenrollment (continued enrollment and home-based at KCC)</b>	3,223	<b>59.9</b>	162	<b>33.2</b>	3,148	<b>48.4</b>	167	<b>33.5</b>	3,059	<b>49.1</b>	155	<b>32.5</b>
<b>Graduated and/or Transferred</b>	1,172	<b>17.9</b>	45	<b>9.2</b>	1,190	<b>18.3</b>	55	<b>11.0</b>	1,071	<b>17.2</b>	71	<b>14.9</b>
<b>Graduates (any award and no subsequent reenrollment)</b>	509	<b>7.8</b>	15	<b>3.1</b>	578	<b>8.9</b>	31	<b>6.2</b>	466	<b>7.5</b>	32	<b>6.7</b>
<b>Transfers to UH 4-yr Institutions</b>	420	<b>6.4</b>	24	<b>4.9</b>	364	<b>5.6</b>	17	<b>3.4</b>	363	<b>5.8</b>	29	<b>6.1</b>
<b>Graduated and Transferred</b>	243	<b>3.7</b>	6	<b>1.2</b>	248	<b>3.8</b>	7	<b>1.4</b>	242	<b>3.9</b>	10	<b>2.1</b>

	Fall 2014			
	Traditional		Only Online	
	N	%	N	%
<b>Fall Headcount (enrolled and home-based at KCC)</b>	6,026	<b>100</b>	422	<b>100</b>
<b>Revised Fall Headcount (excluding Graduates and/or UH 4-yr Transfers)</b>	4,877	<b>80.9</b>	376	<b>89.1</b>
<b>Next Fall Reenrollment (continued enrollment and home-based at KCC)</b>	2,971	<b>49.3</b>	127	<b>30.1</b>
<b>Graduated and/or Transferred</b>	1,149	<b>19.1</b>	46	<b>10.9</b>
<b>Graduates (any award and no subsequent reenrollment)</b>	503	<b>8.3</b>	21	<b>5.0</b>
<b>Transfers to UH 4-yr Institutions</b>	370	<b>6.1</b>	21	<b>5.0</b>
<b>Graduated and Transferred</b>	276	<b>4.6</b>	4	<b>0.9</b>

Shaded row indicates Kapi'olani Institutional Effectiveness Measure  
Excludes Online-Only Students Home-Based at KCC and only enrolled at Remote Campuses

**Table 17: Proportion of Transfers to UH 4-Year Institutions Who Have Enrolled Only Online At Least Once Since 2009**

	Never Only-Online		Only Online		All Transfers	
	N	%	N	%	N	%
<b>Transfer Term</b>						
<b>Fall 2011</b>	469	<b>94.0</b>	30	<b>6.0</b>	499	<b>100</b>
<b>Fall 2012</b>	488	<b>91.2</b>	47	<b>8.8</b>	535	<b>100</b>
<b>Fall 2013</b>	402	<b>89.1</b>	49	<b>10.9</b>	451	<b>100</b>
<b>Fall 2014</b>	451	<b>87.7</b>	63	<b>12.3</b>	514	<b>100</b>
<b>Fall 2015</b>	434	<b>88.6</b>	56	<b>11.4</b>	490	<b>100</b>

Methodology Duplicates KCC Institutional Effectiveness Measures

**Table 18: Proportion of Degrees Awarded at KCC to Students Who Have Enrolled Only Online At Least Once Since 2009**

	Never Only-Online		Only Online		All Students	
	N	%	N	%	N	%
<b>Fiscal Year</b>						
<b>2012</b>	710	<b>87.5</b>	101	<b>12.5</b>	811	<b>100</b>
<b>2013</b>	1018	<b>85.5</b>	173	<b>14.5</b>	1191	<b>100</b>
<b>2014</b>	1312	<b>87.0</b>	196	<b>13.0</b>	1508	<b>100</b>
<b>2015</b>	1143	<b>85.7</b>	191	<b>14.3</b>	1334	<b>100</b>
<b>2016</b>	578	<b>89.3</b>	69	<b>10.7</b>	647	<b>100</b>
<b>All Years</b>	4761	<b>86.7</b>	730	<b>13.3</b>	5491	<b>100</b>

CA and higher awards

For online-only students, requires Grad Term >= Minimum Term Enrolled at KAP Since 2009

### Part 3. Methodological Notes

Data were extracted from ODS for institutional and course information for all KCC students since 2009. Data are presented beginning with the Fall 2011 semester; the additional extracted years are used only to set appropriate baselines for transfer and graduation data, which lag as academic cohorts progress through the system.

Students are defined as online-only if each course in which he/she enrolls during a given semester has the value “DCO” (Distance – Completely Online) in the `de_mode_deliver_mode_iro` field in the ODS `iro_regs` table. Students enrolling in at least one course in a given semester that has a physical meeting time and place (including Hybrid courses) are counted as “Traditional.” This definition of online-only students is valid only for a particular semester, as students may elect online-only instruction in one semester and traditional instruction in a subsequent semester.

Data were aligned with KCC IEMs as much as possible by using the same definitions for items like transfers to 4-year schools and course-success measures. However, online-only students are more flexible than traditional students in terms of campus enrollments: these students maintain a KCC home-base but enroll only at non-KCC UH schools about 10% of the time. This makes direct comparisons between online-only reenrollment and the KCC IEM for reenrollment more difficult, because the IEM would count these students as not reenrolled.<sup>3</sup>

This study does not address how many students enroll online-only for multiple terms or how frequently traditional students who are home-based at KCC enroll only at non-KCC UH institutions. Both would be useful studies in the patterns of online learning and can be pursued by OFIE at later dates.

---

<sup>3</sup> This is appropriate for traditional students. If a student maintains standing in a KCC academic program but only enrolls, for example, at Leeward and Windward for a given term, KCC receives no tuition revenue for that student despite remaining accountable for the student’s record.